

BobBicknell-Knight Altars, 2024 – ongoing

Altars is a series of wall-based paintings embedded within elaborate frames, revolving around time, video game worlds and control.

The altar series is made up of a series of small hybrid paintings of clocks from different video games. The works are hybrid paintings, beginning as digital images found in different game worlds. The images are then printed onto canvas, stretched and painted onto with acrylic paint, with the offline artist's hand interacting with the original digital image. The painting method explores the tension between the digital and physical sides of Bicknell-Knight's practice and is a collaboration between his digital and physical working methods.

The paintings are effectively clocks frozen in time, mimicking how time in video games is often fabricated and stretched, never usually corresponding to time within the physical world. These works are embedded within frames that have been digitally modelled, 3D printed and covered in layers of a concrete mix. The frames resemble and reference various elements of time, alongside having subtle religious connotations and connections to faith, power and control.

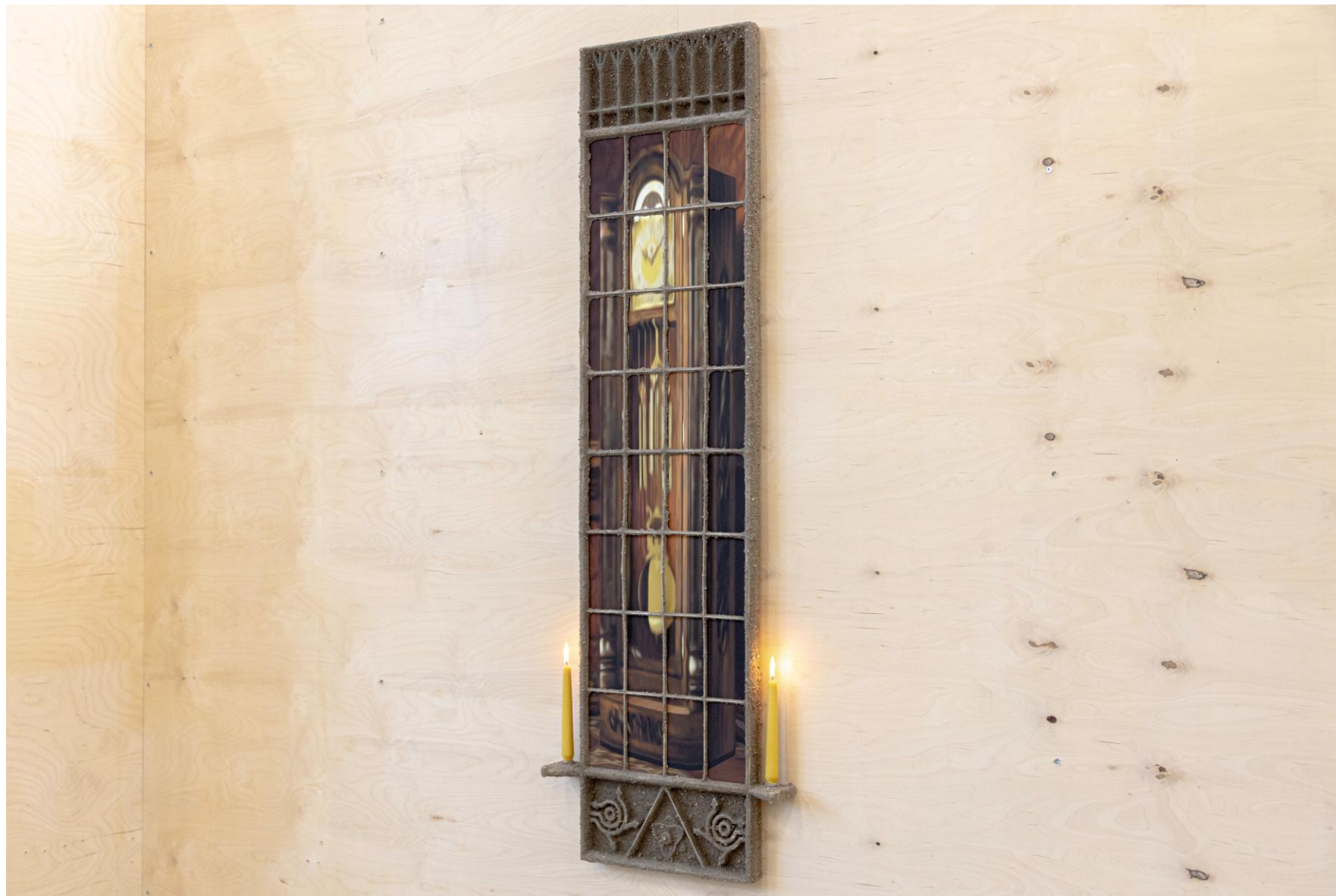
Accompanying the frozen clocks are lit candles, transforming the works into working time pieces.



Threshold, 2025
Printed ink and acrylic on canvas, pine wood, PLA, cement mix, steel bolts, PVA, water, filler
130 x 45 x 8 cm



Threshold, 2025
Printed ink and acrylic on canvas, pine wood, PLA, cement mix, steel bolts, PVA, water, filler
130 x 45 x 8 cm



Threshold, 2025
Printed ink and acrylic on canvas, pine wood, PLA, cement mix, steel bolts, PVA, water, filler
130 x 45 x 8 cm



Threshold, 2025
Printed ink and acrylic on canvas, pine wood, PLA, cement mix, steel bolts, PVA, water, filler
130 x 45 x 8 cm



Threshold, 2025
Printed ink and acrylic on canvas, pine wood, PLA, cement mix, steel bolts, PVA, water, filler
130 x 45 x 8 cm



Threshold, 2025
Printed ink and acrylic on canvas, pine wood, PLA, cement mix, steel bolts, PVA, water, filler
130 x 45 x 8 cm



Threshold, 2025
Printed ink and acrylic on canvas, pine wood, PLA, cement mix, steel bolts, PVA, water, filler
130 x 45 x 8 cm



Threshold, 2025
Printed ink and acrylic on canvas, pine wood, PLA, cement mix, steel bolts, PVA, water, filler
130 x 45 x 8 cm



Threshold, 2025
Printed ink and acrylic on canvas, pine wood, PLA, cement mix, steel bolts, PVA, water, filler
130 x 45 x 8 cm



Threshold, 2025
Printed ink and acrylic on canvas, pine wood, PLA, cement mix, steel bolts, PVA, water, filler
130 x 45 x 8 cm



Passage, 2025
Printed ink and acrylic on canvas, pine wood, PLA, cement mix, PVA, water, filler
43 x 23 x 6 cm



Passage, 2025
Printed ink and acrylic on canvas, pine wood, PLA, cement mix, PVA, water, filler
43 x 23 x 6 cm



Passage, 2025
Printed ink and acrylic on canvas, pine wood, PLA, cement mix, PVA, water, filler
43 x 23 x 6 cm



Passage, 2025
Printed ink and acrylic on canvas, pine wood, PLA, cement mix, PVA, water, filler
43 x 23 x 6 cm



Passage, 2025
Printed ink and acrylic on canvas, pine wood, PLA, cement mix, PVA, water, filler
43 x 23 x 6 cm



Passage, 2025
Printed ink and acrylic on canvas, pine wood, PLA, cement mix, PVA, water, filler
43 x 23 x 6 cm



Passage, 2025
Printed ink and acrylic on canvas, pine wood, PLA, cement mix, PVA, water, filler
43 x 23 x 6 cm



Module, 2025
Printed ink and acrylic on canvas, PLA, cement mix, PVA, water, steel bolt
57 x 22 x 4.4 cm



Module, 2025
Printed ink and acrylic on canvas, PLA, cement mix, PVA, water, steel bolt
57 x 22 x 4.4 cm



Module, 2025
Printed ink and acrylic on canvas, PLA, cement mix, PVA, water, steel bolt
57 x 22 x 4.4 cm